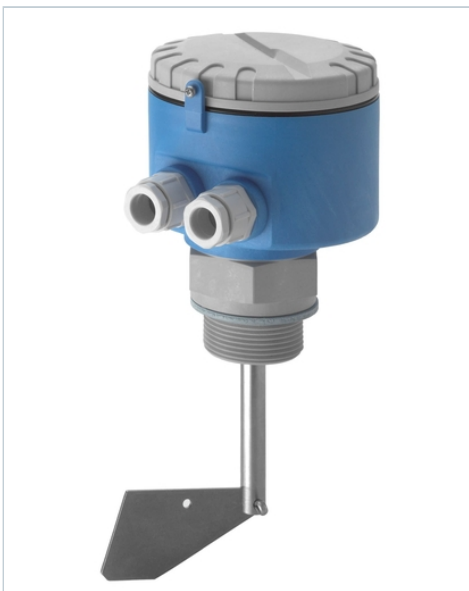


Point level switch Soliswitch FTE30 rotary paddle switch

Simple mechanical mechanism, extremely robust and cost-effective point level switch for bulk solids



from **€285.65**

Price as of 20.01.2022

More information and current pricing:

www.casc.endress.com/FTE30

Benefits:

- Reliable and economical paddle switch
- Highest safety standard
- Diverse instrument designs for use under different application conditions
- Slip clutch prevents impact on paddle
- Ingress protection to IP65 for optimum safety in the process

Specs at a glance

- **Process temperature** -20 °C ... 80 °C (-4 °F ... 170 °F)
- **Process pressure absolute / max. overpressure limit** 0.5 bar to 1.5 bar (7 psi to 22 psi)
- **Min. density of medium** ≥ 100 g/l

Field of application: The economical Soliswitch FTE30 is a paddle switch for point level detection in bulk materials. Its robust polymer housing and compact design makes it an ideal sensor for full, empty and demand alarm in applications with bulk solids. The optimized materials make the unit outstandingly robust and therefore suitable for use in dust explosive areas.

Features and specifications

Point Level / Solids

Measuring principle

Paddle

Point Level / Solids

Characteristic / Application

universally applicable as a full, empty and demand alarm on silos containing solids

Specialities

Hinged paddle

Supply / Communication

230 VAC 50/60 Hz

115 VAC 50/60 Hz

48 VAC 50/60 Hz

24 VAC 50/60 Hz

20 bis 28 VDC

Ambient temperature

-20 °C ... 60 °C (-4 °F ... 140 °F)

Process temperature

-20 °C ... 80 °C (-4 °F ... 170 °F)

Process pressure absolute / max. overpressure limit

0.5 bar to 1.5 bar (7 psi to 22 psi)

Min. density of medium

≥ 100 g/l

Main wetted parts

Shaft: 1.4305

Paddle: 1.4301

Process connection

G 1 1/2", PBT

G 1 1/2", 1.4305

Reinforced shaft G 1 1/2", 1.4305

Point Level / Solids

Sensor length

100 mm (4")

200 mm (8")

300 mm (12")

400 mm (16")

500 mm (20")

600 mm (24")

Rope length of approx 2000 mm (80"), can be shortened

Communication

Micro switch with changeover contact max. 10 A/250 VAC

Certificates / Approvals

No approvals available

Options

Relay

Application limits

max. grain size 50 mm (2")

More information www.casc.endress.com/FTE30